

M-GATEWAY COMPACT EU

Ordering info: RE.45.MGEU

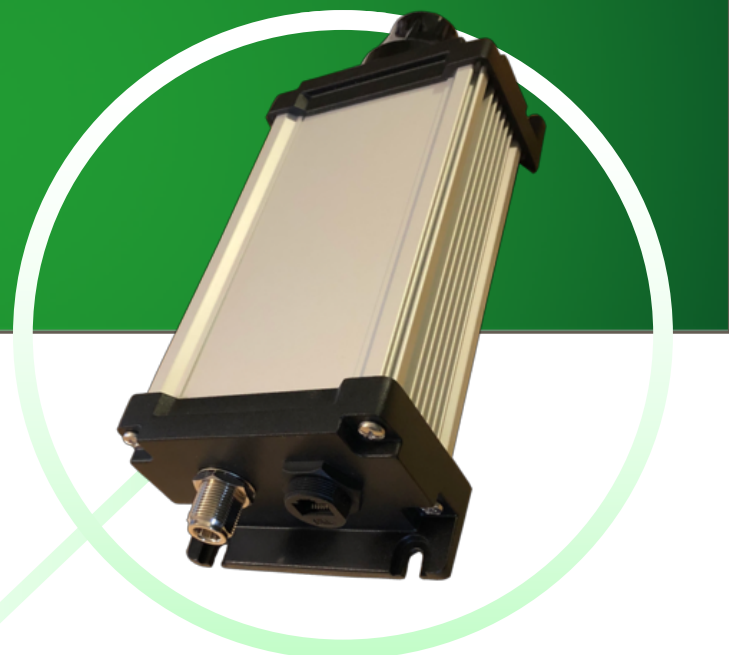
Network Infrastructure

Ruggedized compact IP67 gateway including a GPS receiver for advance timekeeping

Doc.nr.: SA2018MGATEWAY v1.0

The M-gateway is a smart compact ruggedized IoT certified gateway solution, specifically designed for outdoor LoRa public or private network deployments. Its ruggedized compact IP67 design and easy setup makes this outdoor gateway ideal for zero-touch high volume deployments. The M-gateway can be remotely monitored and managed through RFI Services cloud-based managed services platform.

The compact M-gateway will be the perfect match for operators, utilities and enterprises looking for a turnkey public or private IoT network solution. The M-gateway provides a high-quality, low-cost support for LoRa-based IoT applications. The gateway is standard equipped with one LoRa transceiver (8 channels) and a uBlox MAX-M8W GPS receiver for advance timekeeping; enabling class-B operation. The M-gateway comes standard with RFI Linux (4.9.40) and LoRa packet forwarder 4.0.1. pre-installed on the micro SD card. Advanced users can easily replace the pre-installed image their own version(s) of the open source software.



Network Infrastructure

Features

Connectors	
Ethernet	Watertight RJ45
USB Host	Internal USB connector
LoRa	Watertight N-connector
GPS	Onboard GPS antenna
Power Requirements	
Power Adapter	100-240V/AC to 48VDC PoE
Unit ships standard with a 100-240V AC PoE adapter	
Environmental	
Operating Temperature	-0° to +70°C with no derating
Storage Temperature	-40° to +90°C
Relative Humidity	5% to 95% non-condensing
Altitude	0-10,000 feet
Cooling	Convictional - non vented case
Mechanical	
Case Dimensions	260L x 110W x 60H (mm)
Weight	1025 grams, 36 Ounces

LoRa 868MHz (EU) long range operation, up to 15 km range in line-of-sight and < 2 km in urban environment

8-channel design using SX1308 and 2x SX1257 chipset
Microchip AT91SAM9G25 MPU (ARM9@400Mhz)
DDR2 RAM 128 MB @ 16 bit
MicroSD holder push-pull, 16GB micro SD card included

Powered by 220V PoE

10/100Mbps Ethernet interface

Onboard GPS uBlox Max8W receiver and GPS antenna allowing for GPS time-sync for class-B operation

Command line interface


Web interface for local & remote configuration

Works with all major LoRaWAN Network Servers

Remote configurable and remote software upgrades

Extruded aluminum enclosure with pole mounting clamps

2 Year Warranty

Semtech, the  logo and LoRa® are registered trademarks of Semtech Corporation.

All information contained herein is believed to be accurate and is subject to change without notice. No responsibility is assumed for its use. RFI Engineering reserves the right to make changes without notice, design, product components, and product manufacturing methods.

Global Sales information RFI Engineering: **+31 36 750 8268** or **sales@rfi-engineering.com**. For more info **www.rfi-engineering.com**.

Copyright 2018. All Rights Reserved. RFI Engineering B.V., Markerkant 13-76, 1314 AN Almere, The Netherlands.

